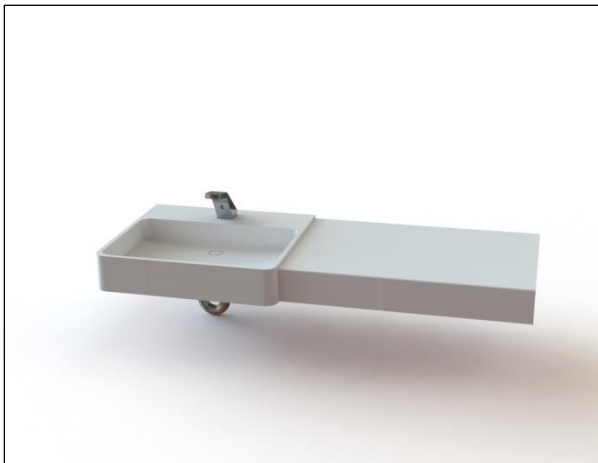


# Installation



Installation Instructions for models:

MVS5/MVS7/MVS10/ESxx

## IMPORTANT

- Read instructions entirely prior to installation.
- Prior to hooking up the fixture to the water supply make sure that all the lines are flushed thoroughly.
- All wall anchors should have a pull out strength of 1000 lbs. or more.
- Units should always be installed according to local plumbing and/or electrical codes.

# Modus-Vivendi – Shelf System

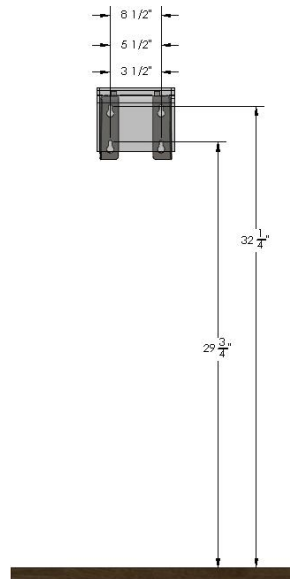
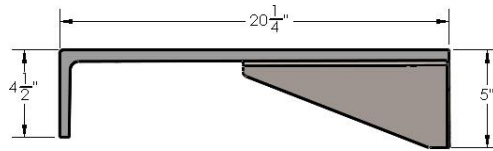
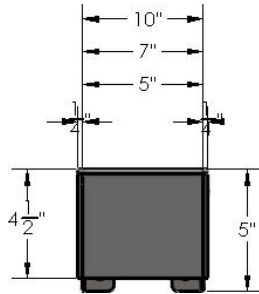
# Installation



## Configurations

### SHELVES

#### 5", 7", 10" Shelves to connect to other lavatory

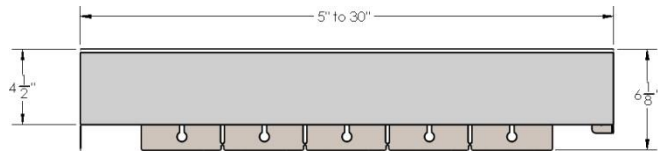


# Modus-Vivendi – Shelf System

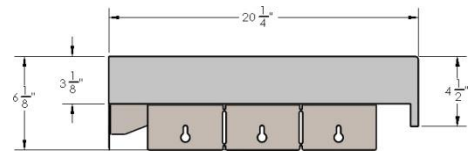
# Installation



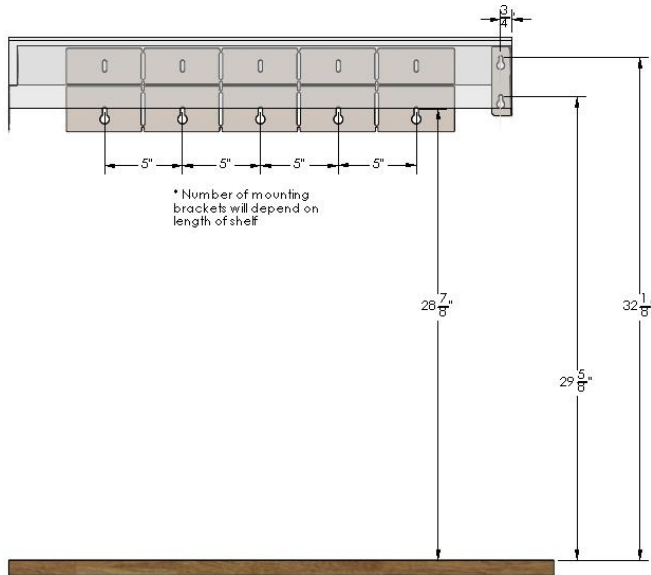
## Custom Shelf to Connect to Wall



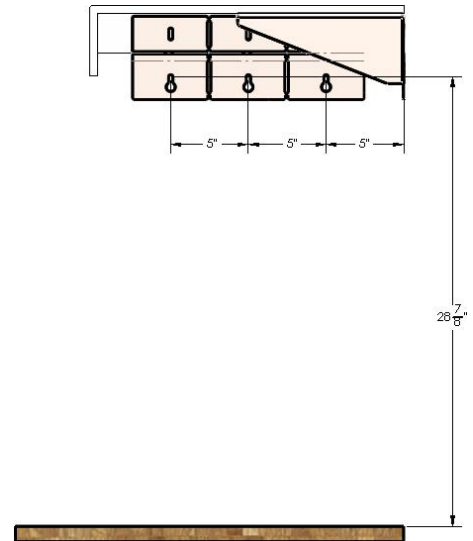
Front



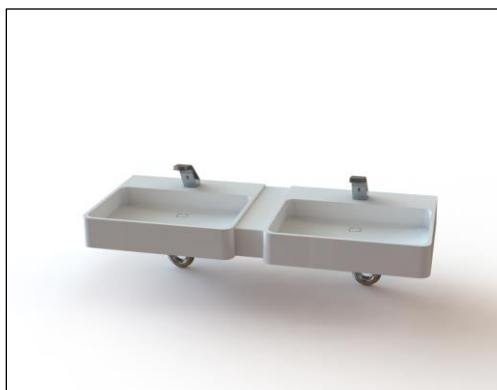
Side



Rough-in Front



Rough-in Side

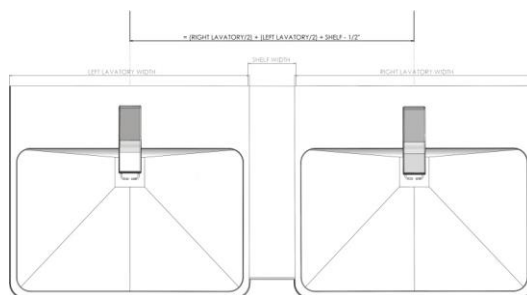


## INSTALLATION OF CONNECTING SHELVES BETWEEN LAVATORIES (MODEL: MVS)

### Step 1: Rough-in

- a. Ensure the lavatories are installed at the correct distance from each other. The lavatories should be installed with center distances according to picture and table below.

Lavatory 1	Lavatory 2	Shelf	Center Distance
VIV20	VIV20	MVS5	25"
VIV20	VIV20	MVS7	27"
VIV20	VIV20	MVS10	30"
VIV20	MOD25	MVS5	27-1/2"
VIV20	MOD25	MVS7	29-1/2"
VIV20	MOD25	MVS10	32-1/2"
VIV20	MOD50	MVS5	40"
VIV20	MOD50	MVS7	42"
VIV20	MOD50	MVS10	45"
MOD25	MOD25	MVS5	30"
MOD25	MOD25	MVS7	32"
MOD25	MOD25	MVS10	35"
MOD25	MOD50	MVS5	42-1/2"
MOD25	MOD50	MVS7	44-1/2"
MOD25	MOD50	MVS10	47-1/2"
MOD50	MOD50	MVS5	55"
MOD50	MOD50	MVS7	57"
MOD50	MOD50	MVS10	60"



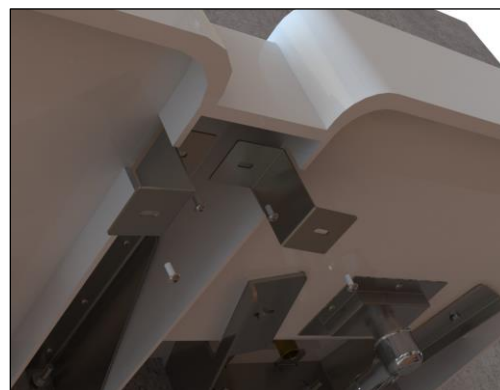
- b. **When installing the fixture at non-standard height make sure to adjust the dimensions for height. The rough-in on page 2 assumes the Modus-Vivendi lavatory is mounted at 34" rim height.**
- c. Use 3/8" anchors to mount the shelf brackets to the wall. The anchors should have pull-out strength of 1000 lbs.

## Step 2: Installation

- a. Anchor the shelf to the wall. Slide the shelf in between the lavatories from the bottom upwards



- b. Install the two brackets on the front of the shelf to anchor the shelf to the bowl.





## INSTALLATION OF CONNECTING SHELVES BETWEEN LAVATORY AND WALL (MODEL: ESxx)

### Step 1: Rough-in

- a. When installing the fixture at non-standard height make sure to adjust the dimensions for height. The rough-in on page 3 assumes the Modus-Vivendi lavatory is mounted at 34" rim height.
- b. Use 3/8" anchors to mount the shelf brackets to the wall. The anchors should have pull-out strength of 1000 lbs.

### Step 2: Installation

- a. Anchor the shelf to the wall. Slide the shelf in between the lavatories from the bottom upwards. Install the brackets as shown on the picture below.

